



METONNA

METONNA
WALLSH STED





METULA





S.T. "METULA"

(Christening: 20th September, 1968)

Purchaser	N.V. Curacaosche Scheepvaart Maatschappij
Classification	LRS ✱ 100 A1 Tanker & ✱ LMC
Length (o.a.)	1,067' 4 $\frac{5}{8}$ "
Length (b.p.)	1,017' 3 $\frac{3}{4}$ "
Breadth (mld.)	154' 8 $\frac{11}{16}$ "
Depth (mld.)	80' 4 $\frac{9}{16}$ "
Draft (ext.)	62' 2 $\frac{1}{4}$ "
Deadweight	207,000 L.T. (at 1966 L.L.C.)
Gross Tonnage	104,400 T
Cargo Hold Capacity	8,727,190 cub. feet
Sea speed	16.0 Knots
Main Engine	IHI marine turbine 1 set Normal Output 28,000 SHP (metric) × 85 r.p.m.
Complement	46 persons

ISHIKAWAJIMA-HARIMA HEAVY INDUSTRIES CO., LTD.
YOKOHAMA SHIPYARD, YOKOHAMA, JAPAN



IN COMMEMORATION OF CHRISTENING

S.T. "METULA"



FOR MESSRS. N.V. CURAÇAOSCHE SCHEEPVAART MAATSCHAPPIJ
(to be managed by SHELL TANKERS N.V.)

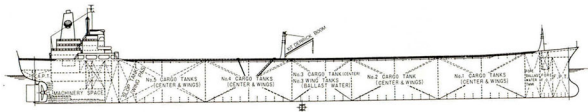
20th September, 1968

ISHIKAWAJIMA-HARIMA HEAVY INDUSTRIES CO., LTD.





207,000 L.T.D.W **S. T. "METULA"** GENERAL ARRANGEMENT



BOAT DECK



BRIDGE DECK



UPPER BRIDGE DECK



CAPTAIN'S DECK



NAVIGATION BRIDGE DECK

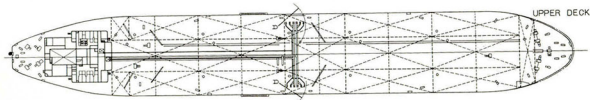


BRIDGE DECK



COMPASS BRIDGE DECK

BOATSWAINS STORE & PUMP SPACE





KYOTO MORNING TOUR

COMPLIMENTS OF JAPAN TRAVEL BUREAU 1968



